

SPEECHMIKE™

PRO

6274

**INSTALLATION AND
USER MANUAL**

PHILIPS

COPYRIGHT

© 1997 – 2002 Philips Speech Processing.

All rights reserved. Reproduction in whole or in part is prohibited without the written consent of the copyright owner.

Information in this manual is subject to change without notice.

TRADEMARKS

SpeechMike is a trademark of Philips.

DISCLAIMER AND NOTICES

Philips Speech Processing has carried out extensive testing with most popular configurations. However, since PC add-ons and drivers change very rapidly, we are unable to guarantee conflict-free operation. Possible solutions for solving such conflicts can be found in the **Readme** file.



The CE mark confirms that the machine corresponds to the relevant guidelines of the European Union.



This manual has been printed on chlorine-free, recycled paper, in line with the highest standards of environmental friendliness.



The cardboard used for packaging can be recycled. This electronic facility contains recyclable material.

Technical changes and errors excepted.

Introduction

Thank you for buying a Philips SpeechMike.

The SpeechMike Pro has been designed to offer optimum user convenience and greater efficiency for your daily work. This manual covers the installation of the SpeechMike Pro hardware and software, the handling of the SpeechMike Pro and the testing of the installation.

SpeechMike Pro USB features

- Professional multimedia input device for single-handed operation.
- LEDs for visual and built-in loudspeaker for acoustic feedback.
- All buttons can be programmed to suit individual user preferences.

Package contents

- Philips SpeechMike Pro LFH 6274 with self-adhesive microphone holder.
- Mouse drivers for Windows 98 SE, Windows ME, Windows 2000 and Windows XP.
- SpeechMike **Control Application** to customize button settings for the control of Windows applications such as Microsoft Office and Internet applications.
- SpeechMike sound recorder with enhanced recording and playback features.
- SpeechMike Pro User Manuals.

Support and feedback

For the latest information not contained in the manual, please refer to the **Readme** file on the SpeechMike CD or go to the **Start** menu, **Programs**, **SpeechMike** and select **Readme**.

For the latest version of the SpeechMike software package, please contact your software vendor.

For additional information on professional speech processing and speech recognition solutions from Philips Speech Processing, please visit our web site at:

<http://www.speech.philips.com>

For further information, please refer to the "World-Wide Service Information" booklet included with this package.

Installation

System requirements

- IBM-compatible PC
- USB port
- Minimum of 32 MB RAM recommended
- Windows 98 SE, Windows Me, Windows 2000 or Windows XP

Hardware installation

Windows ME, Windows 2000 and Windows XP:

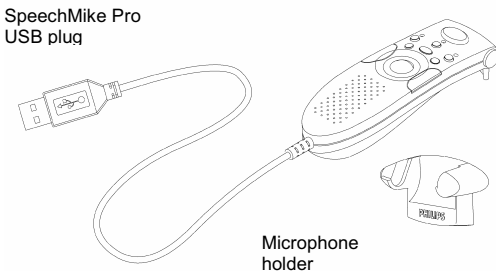
1. Turn on your computer and plug the SpeechMike Pro USB into the USB port.
2. The **New Hardware Found** message will be displayed shortly on your screen.
Note: If this message does not appear, verify whether the USB port is enabled in the BIOS of your system. See your hardware documentation for details or contact your hardware vendor.
3. Installation will proceed automatically.

Windows 98 SE:

Note: The Windows 98 Second Edition CD contains the USB drivers for the microphone and loudspeaker only. The drivers for the LED display and dictation buttons must be installed from the SpeechMike CD before connecting the hardware.

1. Turn on your computer and insert the SpeechMike CD without plugging the SpeechMike Pro USB into the USB port.
2. Autorun.exe will start. If this program is not run when you insert the SpeechMike CD, start setup manually by doing the following:
 - Double-click the **My Computer** icon on the desktop.
 - Double-click the CD-ROM drive icon; you will be shown the contents of the CD.
 - Start the program autorun.exe by double-clicking it.
3. Click **Install** to begin installation. When you are prompted to select the components you wish to install, select the **Control application**, the **SpeechMike recorder** and the **SpeechMike driver**. Follow the instructions on the screen to install the software components.
4. Remove the SpeechMike CD and insert your Windows 98 SE CD.
5. Plug the SpeechMike Pro USB into the USB port. Windows will find a total of three new devices.
6. When the **Add New Hardware Wizard** starts, click **Next**.
7. On the next screen, make sure that **Search for the best driver for your device. (Recommended)** is selected. Then click **Next**.

8. On the following screen, the only option selected should be **Specify a location**, and the path of the Windows\inf subfolder should be displayed in the field. If necessary, uncheck all other options and click **Next**.
9. Windows will now start looking for the necessary files; click **Next**.
Note: The required files from the Windows 98 SE CD can be found in the Setup/Win98 subdirectory, browse to this directory and click **OK**.
10. After the first part of the installation has been completed successfully, click **Finish**.
11. Repeat steps 6–10 until all three SpeechMike Pro USB components are installed correctly .



Software installation

Note: A user must have administrator rights to install the program under Windows 2000 or Windows XP. Contact your system administrator if you need help.

Windows ME, Windows 2000 and Windows XP:

The SpeechMike Pro software is delivered on a CD. When you insert the SpeechMike CD into your CD-ROM drive, autorun.exe is started. Select **Install** to begin the installation. If this program is not run when you insert the SpeechMike CD, start setup manually by doing the following:

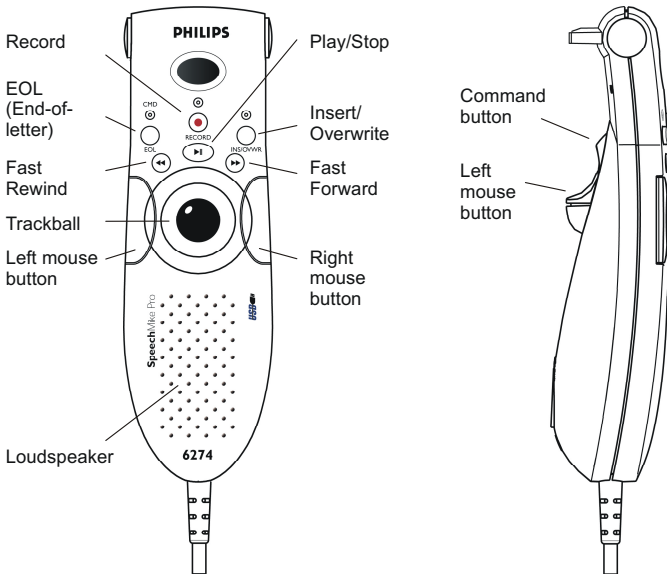
1. Double-click the **My Computer** icon on the desktop.
2. Double-click the CD-ROM drive icon; you will be shown the contents of the CD.
3. Start the program autorun.exe by double-clicking it and select **Install**.

Windows 98 SE:

The software has already been installed as part of the hardware installation described above.

Handling the SpeechMike Pro

Place the SpeechMike Pro in the palm of your hand with your thumb resting on the trackball and your index finger across the trigger underneath.



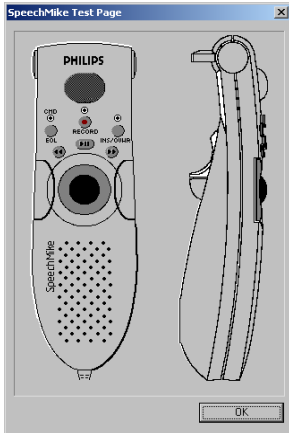
Alternatively, you can use your SpeechMike on your desktop like a conventional trackball.

SpeechMike Pro button functions

When the SpeechMike Pro is installed correctly, the Record, Play/Stop, Fast Rewind and Fast Forward buttons are available and ready for use. However, the functionality of each button depends on the application and whether the buttons are used in a programmed mode. For more information on individual button settings and on how to program buttons, consult the Software Manual.

Testing the Installation

1. Go to the **Start** menu and select **Settings, Control Panel**.
2. Double-click the **Mouse** icon; the **Mouse Properties** dialog box appears.
3. Open the **SpeechMike** tab and click the **Test** button. The following screen appears:



You can now check if the SpeechMike Pro buttons are working correctly by pressing each button; the corresponding button on the screen will toggle.

Note: If the Record, Play/Stop, Fast Rewind, Fast Forward, INS/OVWR and EOL buttons do not work properly in a programmed mode, there is a compatibility problem with an additional mouse; if the mouse buttons do not work properly, there is a hardware conflict. For details on solving these problems, please refer to the **Readme** file on the SpeechMike CD or go to the **Start** menu, **Programs, SpeechMike** and select **Readme**.

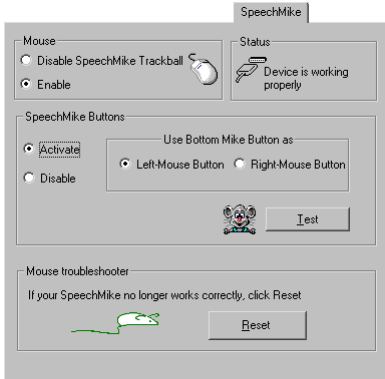
After a successful test, click **OK** and return to your Windows desktop.

The installation is now complete.

SpeechMike Settings

You can make settings for the SpeechMike Pro in the Windows **Control Panel**.

1. Go to the **Start** menu and select **Settings, Control Panel**.
2. Double-click the **Mouse** icon; the **Mouse Properties** dialog box appears.
3. Open the **SpeechMike** tab and the following screen appears:



Mouse

When you select **Disable SpeechMike Trackball**, the trackball, the left and right mouse buttons and the trigger button will be deactivated.

SpeechMike Buttons

When you select **Disable**, the six freely configurable buttons will be deactivated.

Use Bottom Mike Button as

With this selection, you can configure the trigger button on the underside of the SpeechMike to emulate either the left or right mouse button.

Test button

When you click this button, the **SpeechMike Test Page** will be displayed.

Troubleshooting

For the latest information not included in the user manual, please refer to the **Readme** file. The file can be found on the SpeechMike CD and in the SpeechMike program group in the **Start** menu.

If you are using your SpeechMike Pro with Windows 98 SE, check that all components are installed properly as follows:

1. Go to the **Start** menu and select **Settings, Control Panel**.
2. Double-click the **Multimedia** icon; ensure that **USB audio device** is selected for playback and recording. If the SpeechMike is not available in the Control Panel, unplug it and reconnect it.

3. Ensure that the following components are installed in the **Device Manager**:

Under **Human Interface Devices**:

- HID compliant consumer control device
- HID human interface device

Under **Universal Serial Bus Controllers**:

- USB Universal Host Controller
- USB composite device
- USB root hub

Under **Sound, video and game controllers**:

- USB audio device
- USB audio device

Attention:

Using the SpeechMike Pro USB together with certain USB hubs on certain PCs may cause the operating system to freeze during booting.

Workaround: Unplug your SpeechMike before booting and reconnect it afterwards. To solve this problem, we recommend replacing the USB hub or connecting your SpeechMike Pro USB directly to the USB port of your computer.

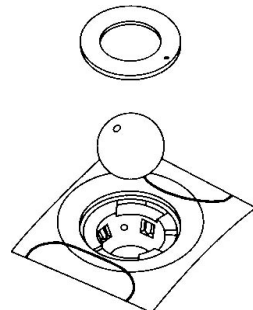
Warning

The cable of your SpeechMike can be damaged if it is kinked or if it is pulled or twisted too much. Please handle the cable carefully to ensure the best possible performance of your SpeechMike.

If the LEDs and buttons of your SpeechMike Pro USB do not work correctly, refer to the Readme file.

Cleaning the Trackball

1. Turn the retainer ring counterclockwise to remove the ball.
2. Wipe the ball with a clean, lint-free cloth.
3. Blow carefully into the ball cage to dislodge dust and lint.
4. Look for a build-up of dirt on the rubber rollers inside the ball cage.
5. If dirty, clean the rollers using a cotton swab moistened slightly with alcohol.
6. Make sure that fluff from the swab is not left on the rollers.
7. Replace the ball and retainer ring.



© 2002 by Philips Speech Processing
5103 109 9455.1



www.speech.philips.com