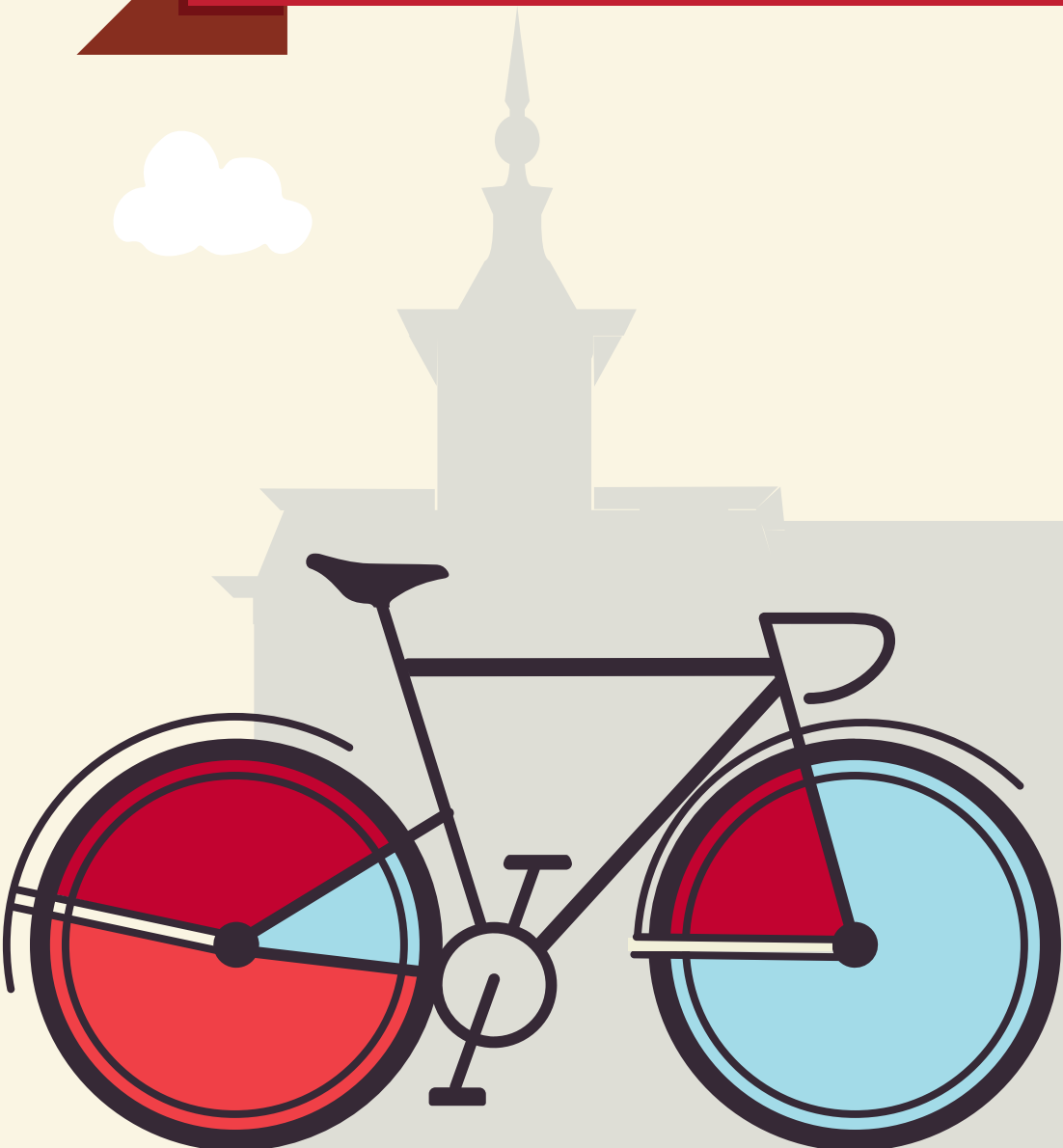


YOUR GUIDE TO TRANSFERRING TO NORTH CENTRAL COLLEGE

BLACK HAWK COLLEGE





This guide is based on the 2024-2025 Black Hawk College catalog, and the 2024-2025 North Central College catalog. North Central College reserves the right to alter any information listed in this guide, including the transferability of courses, without notice or obligation. For assistance with this guide, please call the Office of Admission at (630) 637-5800 or email at admissions@noctrl.edu.

How to use this guide: This course substitution guide is designed to help you select courses at Black Hawk College if you plan to transfer to North Central College. Working with your BHC advisor and NCC transfer admission counselor, refer to this guide to determine courses that meet North Central College requirements in our general education curriculum, academic major and minor requirements, and electives. Your NCC counselor can also provide a major planning worksheet. Listed below is a sample from this guide:

BHC Course Numbers, Titles, Credit					NCC Equivalent Course Numbers & Credit			NCC General Education Codes			Important Information about courses
DEPT	NUM	COURSE TITLE	CREDIT	IAI EQUIV	DEPT	NUM	CREDIT	GENERAL EDUCATION			COMMENTS
HIST	105	US History to 1877	3	S2 900	HIST	Elective	3	SOC	GLO	POW	Or HIST 222 if HIST 255 is completed
HIST	125	Western Civilization I	3	H2 901	HIST	101	3	HUM			

The Cardinal Directions general education curriculum at North Central College is as follows, along with the general education codes you will find in this guide. Please note the column to the far right which indicates which of these requirements may be waived (or required) based on the level of education you achieve prior to transferring. For additional details, please reference the NC catalog: <http://catalog.noctrl.edu/content.php?catoid=26&navoid=2582>.

CARDINAL DIRECTIONS CURRICULUM MAP

Requirement	General Education Code	Credit	Comments
Composition	COMP	4 credits	Met with A.A. or A.S. degree
Writing Intensive	WRI	4 credits	Met with A.A. or A.S. degree
Public Speaking	COM	4 credits	Met with A.A. or A.S. degree
Arts	ART	4 credits	Met with A.A. or A.S. degree
Humanities	HUM	4 credits	Met with A.A. or A.S. degree
Social Science	SOC	4 credits	Met with A.A. or A.S. degree
Science	SCI	4 credits	Met with A.A. or A.S. degree
Quantitative Analysis	QUA	4 credits	Met with A.A. or A.S. degree
Power Structures or Global Understanding	POW or GLO	4 credits	Met with A.A. or A.S. degree GLO may be met with Study Abroad at NCC
Ethical Dimensions	ETH	4 credits	Met with A.A. or A.S. degree
Well Being	WEL	2 credits	Met with A.A. or A.S. degree
Experiential (One of the following):	-Community Engaged Learning -Study Away/Study Abroad -Student Research -CARD 400 – Senior Seminar: Liberal Arts and Problems of Today	2 credits	Met with A.A. or A.S. degree
Career Readiness: Preparation and Experiential*	CARD 250 – Career Preparation CARD 300 – Career Experiential	4 credits total	*Must be taken at NC

*An equivalent 3-credit transfer course may be used to fulfill a General Education requirement.

•One course may fulfill multiple requirements.

•College Transfer Credits are courses taken at a college or university after graduating high school and not earned through AP, IB, or CLEP.

•Only 64 semester hours (96 quarter hours) may transfer from a 2-yr college. Developmental courses (under 100-level) do not transfer.

•Requirements met through an eligible A.A. or A.S. degree may also be met with an eligible A.A.S. degree only if applied to the B.A.S. degree.

•Students with less than 28 transferable hours will need to complete CARD 110, a 1-credit transition course.

COURSE SUBSTITUTIONS FOR STUDENTS TRANSFERRING FROM BLACK HAWK COLLEGE TO NORTH CENTRAL COLLEGE

Based on the 2024-2025 Black Hawk College Catalog and the 2024-2025 North Central College Catalog

<i>Black Hawk College Courses</i>					<i>NCC Courses</i>			<i>NCC General Education and Comments</i>			
DEPT	NUM	COURSE TITLE	SEM CRED	IAI EQUIV	Dept	Number	Credit	GEN ED	GEN ED		COMMENT
ACCT	101	Financial Accounting	3		ACCT	201	3				
ACCT	102	Managerial Accounting	3		ACCT	202	3				
ACCT	103	Financial Accounting Lab	1		No	Credit	0				
ACCT	104	Managerial Accounting Lab	1		No	Credit	0				
ACCT	121	Accounting with Quickbooks I	2		No	Credit	0				
ACCT	123	Accounting with Quickbooks II	2		No	Credit	0				
ACCT	170	Accounting Basics - Career I	3		No	Credit	0				
ACCT	171	Accounting Basics I - Lab	1		No	Credit	0				
ACCT	180	Fundamentals of ACCT Lab II	3		No	Credit	0				
ACCT	181	Accounting Basics II Lab	1		No	Credit	0				
ACCT	208	Intermediate Accounting	4		ACCT	317	4				May not use to fulfill 300-level req in major/minor
ACCT	240	Internal Controls and Fraud	3		ACCT	Elective	3				
ACCT	250	Federal Income Tax I	4		ACCT	330	4				May not use to fulfill 300-level req in major/minor
ACCT	263	Accounting Internship	3			Elective					Evaluated individually
ACCT	290	Payroll Accounting	3		No	Credit	0				
AG	281	Agricultural Economics	4		ECON	Elective	4	SOC			
AG	288	Ag of Developing Countries	3			Elective	3	SOC			
AG		All other AG courses			No	Credit	0				No credit transfers from this department
ANTH	100	Intro to Anthropology	3		ANTH	Elective	3	SOC			
ANTH	101	Introduction to Physical Anthropology	3	S1 902	ANTH	Elective	3	SOC			
ANTH	102	Introduction to Cultural Anthropology	3	S1 901N	ANTH	145	3	SOC	GLO		
ANTH	103	Introduction to Archaeology	3	S1 903	ANTH	Elective	3	SOC			
ANTH	285	Cross-Cultural Women's Studies	3		ANTH	Elective	3	SOC	GLO		
ANTH	290	Special Topics in Anthropology	1-3			Elective					Evaluated individually
ART	100	Art Appreciation	3	F2 900	ARTD	100	3	ART			
ART	101	2-Dimensional Design	3		ARTD	107	3				
ART	111	3-Dimensional Design	3		ARTD	160	3				
ART	121	Drawing I	3		ARTD	120	3				
ART	122	Drawing II	3		ARTD	220	3				
ART	200	Art Problems	1-3			Elective					Evaluated individually
ART	201	Life Drawing	3		ARTD	225	3				
ART	211	Painting	3		ARTD	130	3				
ART	212	Advanced Painting	3		ARTD	230	3				
ART	213	Digital Photography	2-3		ARTD	275	2-3				
ART	215	Digital Imagery	3		ARTD	105	3				
ART	217	Digital Drawing	3		ARTD	140	3				
ART	221	Printmaking	3		ARTD	210	3				
ART	230	Type and Digital Layout	3		ARTD	242	3				
ART	232	The Photographic Series	3		ARTD	Elective	3				
ART	233	Studio Lighting	3		ARTD	Elective	3				
ART	234	Video and Time Based Media	2		MEDI	Elective	2				
ART	235	Website Design for Artists	2		No	Credit	0				
ART	246	Graphic Design	3		ARTD	244	3				
ART	248	Production and Prepress	3		ARTD	310	3				May not use to fulfill 300-level req. in major/minor
ART	271	Ceramics	3		ARTD	150	3				
ART	272	Advanced Ceramics	3		ARTD	250	3				
ART	281	History of Western Art I	3	F2 901	ARTH	100	3	ART	GLO		
ART	282	History of Western Art II	3	F2 902	ARTH	102	4	ART	GLO		

COURSE SUBSTITUTIONS FOR STUDENTS TRANSFERRING FROM BLACK HAWK COLLEGE TO NORTH CENTRAL COLLEGE

Based on the 2024-2025 Black Hawk College Catalog and the 2024-2025 North Central College Catalog

Black Hawk College Courses					NCC Courses			NCC General Education and Comments				
DEPT	NUM	COURSE TITLE	SEM CRED	IAI EQUIV	Dept	Number	Credit	GEN ED	GEN ED		COMMENT	
ART	285	Survey of Asian Art	3	F2 903N	ARTH	Elective	3	ART	GLO			
ART	286	Survey of Non-Western Art	3	F2 903N	ARTH	Elective	3	ART	GLO			
ART	290	Applications in Computer Art	3			Elective	3					
ART	299	Art Internship	1-3			Elective	1-3				Evaluated individually	
ASTR	101	The Solar System	4	P1 906L	PHYS	110	4	SCI				
ASTR	102	Stars and Galaxies	4	P1 906L	PHYS	Elective	4	SCI				
BIOL	100	Introduction to Biology	4	L1 900L	BIOL	Elective	4	SCI				
BIOL	101	General Human Biology	4	L1 904L	BIOL	104	4	SCI				
BIOL	105	General Biology I	5	L1 900L	BIOL	Elective	5	SCI				
BIOL	106	General Biology II	5	L1 910L	BIOL	Elective	5	SCI				
BIOL	120	Nutrition	3		BCHM	140	3	SCI				
BIOL	145	Anatomy - Physiology I	4		BIOL	201	4					
BIOL	146	Anatomy - Physiology II	4		BIOL	202	4					
BIOL	150	Medical Terminology	3		HTSC	156	3					
BIOL	190	Animal Diversity	4	L1 902L	BIOL	310	4	SCI			May not use to fulfill 300-level req in major/minor	
BIOL	200	Environmental Bio-Human Impact	3	L1 905	BIOL	106	3	SCI	GLO		Only one of BIOL 200 or NSCI 102 transfer	
BIOL	201	Environmental Bio-Diversity	3	L1 905	BIOL	106	3	SCI	GLO		Or BIOL elective	
BIOL	207	Selected Topics in Biology	1-2			Elective					Evaluated individually	
BIOL	211	General Botany	4	L1 901L	BIOL	Elective	4	SCI				
BIOL	250	Genetics	3	L1 906	BIOL	230	3	WRI				
BIOL	251	Genetics Laboratory	1		BIOL	Elective	1				If BIOL 250 completed	
BIOL	261	Microbiology	4		BIOL	145	4					
BIOL	295	Research in Biology	1-3			Elective					Evaluated individually	
BE		Business Education			No	Credit	0				No credit transfers from this department	
BL	201	Business Law I	3		BUSN	205	3	ETH				
BL	202	Business Law II	3		BUSN	Elective	3					
BUSN	110	Intro to Business	3		SBEN	100	3					
BUSN	116	Business Relations	3		No	Credit	0					
BUSN	118	Small Business Simulations	3		No	Credit	0					
BUSN	121	Small Business Mgmt	3		No	Credit	0					
BUSN	160	Business Math I	3		No	Credit	0					
BUSN	195	Personal Finance	3		SBEN	210	3	WEL				
BUSN	200	Special Studies	1-3			Elective					Evaluated individually	
BUSN	210	Financial Institutions & Markets	3		FINA	Elective	3					
BUSN	215	Personal Investing	3		No	Credit	0					
BUSN	220	Business Math II	3		No	Credit	0					
BUSN	230	Principles of Marketing	3		MKTG	300	3				May not use to fulfill 300-level req. in major/minor	
BUSN	236	Introduction to Advertising	3		MKTG	Elective	3					
BUSN	238	Salesmanship	3		MKTG	340	3				May not use to fulfill 300-level req. in major/minor	
BUSN	240	Principles of Management	3		MGMT	Elective	3					
BUSN	241	Intro to Supply Chain Management	3		MGMT	Elective	3					
BUSN	242	Principles of Supervision	3		MGMT	Elective	3					
BUSN	243	Developing Team Skills	3		No	Credit	0					
BUSN	245	Business Entrepreneurship	1-3		No	Credit	0					
BUSN	245A	Purchasing the Small Business	1		No	Credit	0					
BUSN	245B	The Business Plan	1		No	Credit	0					
BUSN	245C	Financial Statement Analysis	1		No	Credit	0					
BUSN	247	Internship	3			Elective					Evaluated Individually	

COURSE SUBSTITUTIONS FOR STUDENTS TRANSFERRING FROM BLACK HAWK COLLEGE TO NORTH CENTRAL COLLEGE										
Based on the 2024-2025 Black Hawk College Catalog and the 2024-2025 North Central College Catalog										
Black Hawk College Courses					NCC Courses			NCC General Education and Comments		
DEPT	NUM	COURSE TITLE	SEM CRED	IAI EQUIV	Dept	Number	Credit	GEN ED	GEN ED	COMMENT
BUSN	249	Seminar	1			Elective				Evaluated Individually
BUSN	250	Human Resource Management	3		MGMT	345	3			May not use to fulfill 300-level req. in major/minor
BUSN	251	Organizational Behavior	3		BUSN	Elective	3			
BUSN	252	Pay & Benefits Administration	3		No	Credit	0			
BUSN	260	Business Financial Management	3		FINA	Elective	3			
BUSN	264	Internship II	3			Elective				Evaluated individually
BUSN	266	Business Policy and Ethics	3		BUSN	Elective	3			
BUSN	270	Intro to International Business	3		BUSN	201	3			
BUSN	272	International Marketing	3		MKTG	460	3			May not use to fulfill 400-level req. in major/minor
BUSN	280	Intro to E-Commerce	3		BUSN	Elective	3			
BUSN	284	Marketing for E-Commerce	3		MKTG	Elective	3			
CA		Carpenter Apprenticeship			No	Credit	0			No credit transfers from this department
CES	100	College Experience & Success			No	Credit	0			
CHEM	101	General Chemistry I	4	P1 902L	CHEM	121	4	SCI		Only one of CHEM 101 or 110 transfer
CHEM	102	General Chemistry II	4		CHEM	122	4			
CHEM	110	Introduction to Chemistry	4	P1 902L	CHEM	121	4	SCI		Only one of CHEM 101 or 110 transfer
CHEM	111	Principles of Organo-Bio-Chem	4	P1 904L	BCHM	365	4	SCI		May not use to fulfill 300-level req. in major/minor
CHEM	203	Organic Chemistry I	5		CHEM	251	5			
CHEM	204	Organic Chemistry II	5		CHEM	252	5			
CHEM	206	Basic Biochemistry	3		BCHM	Elective	3			
CHEM	295	Research in Chemistry	1-3		CHEM	Elective	1-3			
CIP	101	Computer Logic and Design	3		INFS	Elective	3			
CIP	104	Intro to Com Programming	3		INFS	Elective	3			
CIP	150	Secure Coding	3		CSCE	Elective	3			
CIP	170	Web Page Development	4		INFS	115	4			Only 1 of CIP170 or CIP 170A transfer
CIP	170A	Web Page Development I - HTMS/CSS	2		INFS	115	2			Only 1 of CIP170 or CIP 170A transfer
CIP	182	Javascript	3		CSCE	Elective	3			
CIP	190	Team MS Office/Sharepoint	3		No	Credit	0			
CIP	201	Microsoft Project	1		No	Credit	0			
CIP	214	C# Programming	4		No	Credit	0			
CIP	217	Advanced C# Programming	4		No	Credit	0			
CIP	220	Intro to Assured Software Eng	3		No	Credit	0			
CIP	227	Database Management	3		CSCE	Elective	3			
CIP	228	Web Database Programming	3		INFS	215	3			
CIP	240	Mobile Application Development	3		CSCE	330	3			May not use to fulfill 300-level req. in major/minor
CIP	250	Java Programming Fundamentals	3		CSCE	Elective	3			
CIP	260	Systems Design and Development	3		MGMT	Elective	3			
CIP	270	Field Project	3			Elective				Evaluated individually
CIP	299	Independent Study	.5-3			Elective				Evaluated individually
COMM	100	Communication Skills	3		No	Credit	0			
COMM	105	Essentials of English	3		No	Credit	0			
CRJU	104	Police Administration	3		No	Credit	0			
CRJU	109	Police Community Relations	3		No	Credit	0			
CRJU	151	Criminal Justice System	3		SOCI	340	3			May not use to fulfill 300-level req. in major/minor
CRJU	152	Criminology	3		CRIM	100	3			
CRJU	153	Survey of Corrections	3		No	Credit	0			
CRJU	245	Applied Forensics	3		No	Credit	0			
CRJU	247	Criminology and Juvenile Delinquency	3		SOCI	221	3	POW		

COURSE SUBSTITUTIONS FOR STUDENTS TRANSFERRING FROM BLACK HAWK COLLEGE TO NORTH CENTRAL COLLEGE											
Based on the 2024-2025 Black Hawk College Catalog and the 2024-2025 North Central College Catalog											
Black Hawk College Courses					NCC Courses			NCC General Education and Comments			
DEPT	NUM	COURSE TITLE	SEM CRED	IAI EQUIV	Dept	Number	Credit	GEN ED	GEN ED		COMMENT
CRJU	253	Probation and Parole	3		SOCI	Elective	3				
CRJU	254	Criminal Investigation I	3		No	Credit	0				
CRJU	255	Criminal Law	3		SOCI	Elective	3				
CRJU	257	Ethics in Criminal Justice	3		No	Credit	3				
CRJU	271	Internship in Criminal Justice	3		No	Credit	0				
CRJU	295	Topics in Criminal Justice	3			Elective					Evaluated individually
CS	90	Basic Computer Skills	1		No	Credit	0				
CS	100	Introduction to Computers	3		No	Credit	0				
CS	105	Computer Science: Principles	3		CSCE	Elective	3				
CS	121	Intro to Computer Science	4		CSCE	160	4				
CS	225	Advanced Programming	4		CSCE	220	4				
CS	227	Database Management Systems	3		CSCE	360	3				May not use to fulfill 300-level req in major/minor
CS	252	Data Structures	3		CSCE	210	3				
CS	260	Systems Design and Development	3		CSCE	Elective	3				
ECE	100	Intro to Early Childhood	3		NCC	Elective	3				
ECE	115	Infant/Toddler Development	3		No	Credit	0				
ECE	200	Growth & Development Young Child	3		PSYC	Elective	3				
ECE	201	Health, Safety and Nutrition	3		HTSC	Elective	3				
ECE	202	Observ/Assessment Y.C	3		No	Credit	0				
ECE	203	Curriculum Early Childhood Program	3		EDUC	Elective	3				
ECE	204	ECE Practicum I			No	Credit	0				
ECE	205	Lang Dev & Activ for Young Chi	3		NCCC	Elective	3				
ECE	214	ECE Practicum II	3		No	Credit	0				
ECE	215	Infant/Toddler Curriculum	3		No	Credit	0				
ECE	220	Admin/Sup/EC Prog	3		No	Credit	0				
ECE	222	Child, Family, and Community	3		No	Credit	0				
ECE	224	Methods of Guiding Child Behavr	3		No	Credit	0				
ECE	225	Math and Science for the Young Child	3		NCCC	Elective	3				
ECE	299	Indep Study Workshops/Seminar	1-4			Elective					Evaluated individually
ECON	150	Consumer Economics	3		SBEN	Elective	3				
ECON	221	Principles of Macro Economics	3	S3 901	ECON	205	3	SOC			
ECON	222	Principles of Micro Economics	3	S3 902	ECON	200	3	SOC			
ECON	270	Intro to Int'l Business	3		BUSN	201	3				
EDUC	202	Multicultural/Soc Found of Education	3		EDUC	Elective	3				
EDUC	210	The Exceptional Child	3		EDUC	330	3				May not use to fulfill 300-level req in major/minor
EMS		Emergency Medical Services			No	Credit	0				No credit transfers from this department
ENG		All Courses Numbered Below 100	0		No	Credit	0				
ENG	100	Academic Writing Conventions	3		No	Credit	0				
ENG	101	Composition I	3	C1 900	ENGL	110	3	COMP			
ENG	102	Composition II	3	C1 901R	ENGL	110	3	COMP			WRI if ENG 101 completed
ENG	132	Technical Writing	3		ENGL	280	3	ETH			
ENG	190	Introduction to Literature	3	H3 900	ENGL	Elective	3	HUM			
ENG	205	Studies in Literature	3		ENGL	Elective	3	HUM			
ENG	206	Ethnic American Literature	3	H3 910D	ENGL	332	3	HUM	POW		May not use to fulfill 300-level req in major/minor
ENG	207	Introduction to Women Writers	3	H3 911D	ENGL	Elective	3	HUM			
ENG	210	Introduction to Fiction	3	H3 901	ENGL	104	3	HUM			
ENG	213	Early American Literature	3	H3 914	ENGL	204	3	HUM			
ENG	214	Modern American Literature	3	H2 915	ENGL	208	3	HUM	POW		

COURSE SUBSTITUTIONS FOR STUDENTS TRANSFERRING FROM BLACK HAWK COLLEGE TO NORTH CENTRAL COLLEGE

Based on the 2024-2025 Black Hawk College Catalog and the 2024-2025 North Central College Catalog

Black Hawk College Courses					NCC Courses			NCC General Education and Comments				
DEPT	NUM	COURSE TITLE	SEM CRED	IAI EQUIV	Dept	Number	Credit	GEN ED	GEN ED		COMMENT	
ENG	217	African and Caribbean Literature	3	H3 908N	ENGL	Elective	3	HUM				
ENG	218	Latin American Lit-Translation	3	H3 908N	ENGL	Elective	3	HUM				
ENG	219	Asian Literature	3	H3 908N	ENGL	Elective	3	HUM				
ENG	221	Survey of British Literature	3	H3 912	ENGL	Elective	3	HUM				
ENG	222	Modern British Literature	3	H3 913	ENGL	206	3	HUM				
ENG	223	Introduction to Shakespeare	3	H3 905	ENGL	302	3	HUM			May not use to fulfill 300-level req in major/minor	
ENG	231	Fiction Writing	3		ENGL	Elective	3	ART				
ENG	232	Poetry Writing	3		ENGL	Elective	3	ART				
ENG	240	Children's Literature	3	H3 918	ENGL	Elective	3	HUM				
ENG	250	Film As Literature	3	HF 908	FILM	Elective	3	HUM				
ENGT		Engineering Technology			No	Credit	0				No credit transfers from this department	
EQ		Equine			No	Credit	0				No credit transfers from this department	
ESL		English as a Second Language			No	Credit	0				No credit transfers from this department	
FREN	101	Elementary French I	4		FREN	101	4					
FREN	102	Elementary French II	4		FREN	102	4					
FREN	201	Intermediate French I	4		FREN	201	4					
FREN	202	Intermediate French II	4	H1 900	FREN	202	4	HUM				
GT	200	General Technology			No	Credit	0				No credit transfers from this department	
GE		General Engineering			No	Credit	0				No credit transfers from this department	
HEAL	102	Foundations of Wellness	3		HTSC	Elective	3	WEL				
HEAL	200	First Aid	1-3		HTSC	Elective	1-3				HTSC 100 if 2 or 3 hours earned	
HIM		Health Information Management			No	Credit	0				No credit transfers from this department	
HIST	105	US History to 1877	3	S2 900	HIST	Elective	3	SOC	GLO	POW	Or HIST 222 if HIST 255 completed	
HIST	106	US History Since 1877	3	S2 901	HIST	Elective	3	SOC	GLO	POW	Or HIST 224 if HIST 255 completed	
HIST	125	Western Civilization I	3	H2 901	HIST	101	3	HUM				
HIST	127	Western Civilization II	3	H2 902	HIST	102	3	HUM	GLO			
HIST	141	History of Asia to 1500	3	S2 908N	HIST	Elective	3	SOC	GLO			
HIST	142	History of Asia since 1500	3	S2 909N	HIST	Elective	3	SOC	GLO		Or HIST 165 if HIST 141 completed	
HIST	151	History of the Middle East since 1700	3	S2 919N	HIST	180	3	SOC	ETH	GLO		
HIST	190	A History of American Labor	3		HIST	Elective	3	SOC	POW			
HIST	200	African-American History	3		HIST	112	3	HUM	ETH	POW		
HIST	205	Topics in History	3			Elective					Evaluated individually	
HIST	210	Directed Study in History	1			Elective					Evaluated individually	
HIST	222	Comparative Religions	3	H5 904N	RELG	100	3	HUM	GLO			
HIST	254	American Civil War	3		HIST	116	3	SOC	ETH	POW		
HIST	255	History of Illinois	3		HIST	Elective	3	SOC	POW			
HIST	256	American Westward Expansion	3		HIST	114	3	HUM	GLO	POW		
HIST	265	World War II	3		HIST	Elective	3	SOC	GLO	POW		
HONR	200	Honors Seminar	1			Elective					Evaluated individually	
HONR	205	Honors Independent Study	1-3			Elective					Evaluated individually	
HORT		Horticulture			No	Credit	0				No credit transfers from this department	
HUM	101	Humanities I	3	HF 900	NCCC	Elective	3	HUM				
HUM	102	Humanities II	3	HF 901	NCCC	Elective	3	HUM				
IND	299	Independent Study	1-4			Elective					Evaluated individually	
IS	200	Global Issues	3	S9 900	GLST	Elective	3	SOC	GLO			
ITS		Information Technology Support			No	Credit	0				No credit transfers from this department	
LIB	240	Prior Learning Portfolio	1		No	Credit	0					
LIB	250	Field Study	1-4			Elective					Evaluated individually	

COURSE SUBSTITUTIONS FOR STUDENTS TRANSFERRING FROM BLACK HAWK COLLEGE TO NORTH CENTRAL COLLEGE

Based on the 2024-2025 Black Hawk College Catalog and the 2024-2025 North Central College Catalog

<i>Black Hawk College Courses</i>					<i>NCC Courses</i>			<i>NCC General Education and Comments</i>			
DEPT	NUM	COURSE TITLE	SEM CRED	IAI EQUIV	Dept	Number	Credit	GEN ED	GEN ED		COMMENT
LIB	260	Internship	2-5			Elective					Evaluated individually
LW		Logistics and Warehousing			No	Credit	0				No credit transfers from this department
MATH		All Math Courses Numbered Below 100			No	Credit	0				
MATH	103	Essentials of Technical Math	5		No	Credit	0				
MATH	108	Statistics for General Education	3	M1 902	PSYC	250	3	QUA			Only one of MATH 108 or MATH 228 transfer
MATH	110	Mathematics for General Education	3	M1 904	MATH	120	3	QUA			
MATH	112	College Algebra	4		MATH	Elective	4				
MATH	113	Technical Algebra and Geometry	5		No	Credit	0				
MATH	116	Trigonometry	3		MATH	140	3				Only one of MATH 116 or MATH 118 transfer
MATH	118	Precalculus	5		MATH	140	5				Only one of MATH 116 or MATH 118 transfer
MATH	123	Technical Algebra/Trigonometry	5		No	Credit	0				
MATH	124	Calculus I with Analytic Geometry	4	M1 900	MATH	151	4	QUA			
MATH	131	Finite Mathematics	3	M1 906	MATH	130	3	QUA			
MATH	132	Calculus for Bus/Soc Sciences	4	M1 900B	MATH	Elective	4	QUA			
MATH	161	Discrete Mathematics	3	M1 905	MATH	Elective	3	QUA			
MATH	210	Math for Teaching and Learning	4		MATH	108	4	QUA			
MATH	223	Technical Calculus	4		MATH	Elective	4				
MATH	225	Calculus II with Analytic Geometry	4	M1 900	MATH	152	4	QUA			
MATH	226	Calculus III with Analytic Geometry	5	M1 900	MATH	253	5	QUA			
MATH	228	Probability and Statistics	3	M1 902	BUSN	265	3	QUA			Only one of MATH 108 or MATH 228 transfer
MATH	230	Linear Algebra	3		MATH	300	3				May not use to fulfill 300-level req. in major/minor
MATH	235	Differential Equations	3		MATH	315	3				May not use to fulfill 300-level req. in major/minor
MCA	221	Intro to Mass Communications	3		COMM	185	3				
MECH		Mechanics			No	Credit	0				
MUSC	100	Applied Lesson I	1			Elective					Evaluted individually
MUSC	101	Instrumental Ensemble	1		MUEN	114	1				
MUSC	102	Jazz Ensemble	1		MUEN	122	1				
MUSC	103	Instrumental Chamber Ensemble	1		MUEN	190	1				
MUSC	106	Concert Choir I	1		MUEN	101	1				
MUSC	108	Community Chorale	1		MUEN	103	1				
MUSC	109	Chamber Singers	1		MUEN	104	1				
MUSC	111	Theory of Music I	4		MUSI	101	4				
MUSC	112	Theory of Music II	4		MUSI	102+108	4				
MUSC	113	Exploring Music Literature	3		MUSI	229	3				
MUSC	114	Class Piano I	1		MUSI	Elective	1				
MUSC	116	Class Piano II	1		MUSI	Elective	1				
MUSC	154	Music Appreciation	3	F1 900	MUSI	150	3	ART			
MUSC	158	Introduction Non-Western Music	3	F1 903N	MUSI	156	3	ART	GLO		
MUSC	200	Applied Lesson II	2			Elective					Evaluated individually
MUSC	206	Concert Choir II	1		MUEN	101	1				
MUSC	209	Chamber Singers II	1		MUEN	104	1				
MUSC	211	Theory of Music III	4		MUSI	201	4				
MUSC	212	Theory of Music IV	4		MUSI	202	4				
MUSC	214	Electronic Music I	3		MUSI	Elective	3				
MUSC	215	Electronic Music II	3		MUSI	Elective	3				
MUSC	216	Class Piano III	1		MUSI	Elective	1				
MUSC	217	Class Piano IV	1		MUSI	Elective	1				
NA		Nursing Assistant			No	Credit	0				No credit transfers from this department

COURSE SUBSTITUTIONS FOR STUDENTS TRANSFERRING FROM BLACK HAWK COLLEGE TO NORTH CENTRAL COLLEGE										
Based on the 2024-2025 Black Hawk College Catalog and the 2024-2025 North Central College Catalog										
Black Hawk College Courses					NCC Courses			NCC General Education and Comments		
DEPT	NUM	COURSE TITLE	SEM CRED	IAI EQUIV	Dept	Number	Credit	GEN ED	GEN ED	COMMENT
NETW		Computer Networking			No	Credit	0			No credit transfers from this department
NSCI	101	Environmental Science I	3	LP 900	ENVI	Elective	3	SCI	GLO	
NSCI	102	Environmental Science II	4	LP901L	ENVI	Elective	4	SCI	GLO	ENVI106 if NSCI101 completed/Only 1 of B200/201 trans
NURS		Nursing			No	Credit	0			No credit transfers from this department
PCA		Patient Care Assistant			No	Credit	0			No credit transfers from this department
PE	125	Physical Fitness I	1		KINE	Activity	1			A maximum 8 hours of KINE activity transfer
PE	126	Physical Fitness II	1		KINE	Activity	1			A maximum 8 hours of KINE activity transfer
PE	127	Physical Fitness III	1		KINE	Activity	1			A maximum 8 hours of KINE activity transfer
PE	128	Physical Fitness IV	1		KINE	Activity	1			A maximum 8 hours of KINE activity transfer
PE	210	Intro to Sports Management	3		SMGT	Elective	3	SOC		
PE	217	Current Issues in Sports	3		SMGT	Elective	3			
PE	260	Physical Education Grades 1-6	3		KINE	Elective	3			
PHIL	100	Logic	3	H4 906	PHIL	230	3	QUA		
PHIL	101	Introduction to Philosophy	3	H4 900	PHIL	100	3	HUM	ETH	
PHIL	103	Ethics	3	H4 904	PHIL	110	3	HUM	ETH	
PHIL	205	Studies in Philosophy	3		PHIL	Elective	3	HUM		
PHIL	206	Philosophy of Religion	3	H4 905	PHIL	360	3	HUM	ETH	May not use to fulfill 300-level req. in major/minor
PHYS	101	College Physics I	5	P1 900L	PHYS	131	5	SCI		
PHYS	102	College Physics II	5		PHYS	132	5			
PHYS	110	Introduction to Physics	4	P1 900L	PHYS	SCI	4	SCI		
PHYS	140	Practical Physics	3	P1 900	PHYS	SCI	3	SCI		
PHYS	201	Mechanics and Thermal Physics	5	P2 900L	PHYS	161	5	SCI		
PHYS	202	Electricity and Magnetism	5		PHYS	162	5			
PHYS	214	Modern Physics	2		PHYS	Elective	2			
PN		Practical Nursing			No	Credit	0			No credit transfers from this department
POLS	122	American National Government	3	S5 900	POLS	101	3	SOC	POW	
POLS	200	Introduction to Political Thought	3	H4 907	POLS	Elective	3	HUM		
POLS	291	Congressional Internship	3		POLS	Elective	3			
PS	101	Introduction to Physical Science	4	P9 900L	SCIE	Elective	4	SCI		
PS	205	Issues in Science, Tech and Soc	3	P9 900	SCIE	Elective	4	SCI		
PSYC	101	Intro to Psychology	3	S6 900	PSYC	100	3	SOC		
PSYC	119	Understanding Human Sexuality	3		PSYC	Elective	3			
PSYC	199	Psychology of Women	3		PSYC	Elective	3			
PSYC	200	Human Growth and Development	3	S6 902	PSYC	235	3	SOC		
PSYC	210	Personality Theories	3		PSYC	320	3			May not use to fulfill 300-level req. in major/minor
PSYC	230	Social Psychology	3		PSYC	240	3			
PSYC	250	Abnormal Psychology	3		PSYC	324	3			May not use to fulfill 300-level req. in major/minor
PSYC	262	Child Psychology	3	S6 903	PSYC	210	3	SOC		
PSYC	285	Cross-Cultural Women's Studies	3		PSYC	Elective	3			
PSYC	295	Special Topics in Psychology	1-3			Elective				Evaluated individually
PTA		Physical Therapist Assistant			No	Credit	0			No credit transfers from this department
REA		Reading			No	Credit	0			No credit transfers from this department
SOC	101	Principles of Sociology	3	S7 900	SOCI	100	3	SOC	POW	
SOC	102	Contemporary Social Problems	3	S7 901	SOCI	Elective	3	SOC		
SOC	222	Introduction to Social Work	3		SOCI	250	3			
SOC	230	Sociology of Sex and Gender	3	S7 904D	SOCI	210	3	SOC	POW	
SOC	250	Minority Relations	3	S7 903D	SOCI	211	3	SOC	POW	
SOC	251	Sociology of Families	3	S7 902	SOCI	342	3	GLO		May not use to fulfill 300-level req. in major/minor

COURSE SUBSTITUTIONS FOR STUDENTS TRANSFERRING FROM BLACK HAWK COLLEGE TO NORTH CENTRAL COLLEGE

Based on the 2024-2025 Black Hawk College Catalog and the 2024-2025 North Central College Catalog

<i>Black Hawk College Courses</i>					<i>NCC Courses</i>			<i>NCC General Education and Comments</i>			
DEPT	NUM	COURSE TITLE	SEM CRED	IAI EQUIV	Dept	Number	Credit	GEN ED	GEN ED		COMMENT
SOC	261	Deviant Behavior	3		SOCI	Elective	3				
SOC	264	Social Psychology of Aging	3	S6 905	PSYC	230	3	SOC			
SOC	290	Studies in Sociology	1-3			Elective					Evaluated individually
SPAN	101	Elementary Spanish I	4		SPAN	101	4				
SPAN	102	Elementary Spanish II	4		SPAN	102	4				
SPAN	201	Intermediate Spanish I	4		SPAN	201	4				
SPAN	202	Intermediate Spanish II	4	H1 900	SPAN	202	4	HUM			
SPAN	253	Advanced Spanish I	3	H1 900	SPAN	Elective	3	HUM			
SPAN	254	Advanced Spanish II	3	H1 900	SPAN	Elective	3	HUM			
SPEC	101	Principles of Speech Communication	3	C2 900	COMM	110	3				
SPEC	111	Business & Professional Communicatn	3		COMM	280	3				
SPEC	114	Interpersonal Communication	3		COMM	200	3	SOC			
SPEC	175	Intercultural Communication	3		COMM	317	3				May not use to fulfill 300-level req. in major/minor
SPEC	200	Communication Experience	1-3			Elective					Evaluated individually; Repeatable; A max 3 hrs transfr
SPEC	210	Public Speaking	3		COMM	287	3	ART			
ST		Surgical Technology			No	Credit	0				No credit transfers from this department
THEA	111	Introduction to Theatre Arts	3	F1 907	THEA	102	3	ART			
TMAT	101	Technical Math I	1-3		No	Credit	0				
TV	212	History & Appreciation Motion Picture	3	F2 909	FILM	Elective	3	ART			
VA		Veterianry Assisting			No	Credit	0				No credit transfers from this department
VT		Veterianry Technology			No	Credit	0				No credit transfers from this department
WLD		Welding			No	Credit	0				No credit transfers from this department